

64615 HLX

Halogen lamps with reflector MR16



Product family features

- Xenon instead of krypton as the filler gas (XENOPHOT HLX versions)
- Luminous flux up to 10 % higher with same power consumption (XENOPHOT HLX versions)



Product datasheet

Technical data

Product information

| | |
|-----------------|-----------|
| Order reference | 64615 HLX |
|-----------------|-----------|

Electrical data

| | |
|-----------------|---------|
| Nominal voltage | 12.0 V |
| Nominal wattage | 75.00 W |

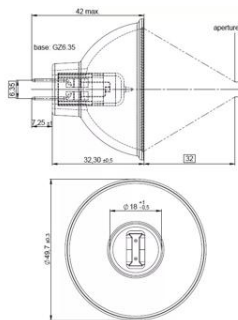
Photometrical data

| | |
|---------------------------|--------|
| Maximum color temperature | 3200 K |
|---------------------------|--------|

Light technical data

| | |
|--------------|---------|
| Focal length | 32.0 mm |
|--------------|---------|

Dimensions & weight



| | |
|----------|---------|
| Diameter | 51.0 mm |
| Length | 42.0 mm |

Lifespan

| | |
|----------|------|
| Lifespan | 50 h |
|----------|------|

Additional product data

| | |
|------------------------------------|----------|
| Coating | Dichroic |
| Base (standard designation) | GZ6.35 |
| Minimum diameter of lamp enclosure | 51.0 mm |

Capabilities

| | |
|---------|--------|
| Cooling | Forced |
|---------|--------|

Product datasheet

| | |
|------------------|---------|
| Burning position | p90/p15 |
|------------------|---------|

Country specific categorizations

| | |
|-----------------|-----------|
| ANSI code | EFN |
| LIF | A1/230 |
| Order reference | 64615 HLX |

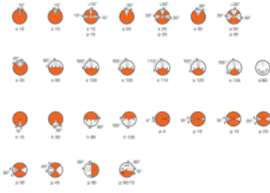
Environmental information

| Information according Art. 33 of EU Regulation (EC) 1907/2006 (REACH) | |
|---|------------------------------------|
| Date of Declaration | 29-02-2024 |
| Primary Article Identifier | 4050300006796 4055462168832 |
| Candidate List Substance 1 | No declarable substances contained |
| Declaration No. in SCIP database | In work |

Country specific information

| Product code | METEL code | SEG-No. | STK-Number | UK Org |
|---------------|--------------|---------|------------|--------|
| 4050300006796 | OSRH64615HLX | - | - | - |
| 4050300006796 | OSRH64615HLX | - | - | - |

Product datasheet



Logistical Data

| Product code | Product description | Packaging unit (Pieces/Unit) | Dimensions (length x width x height) | Volume | Gross weight |
|---------------|---------------------|------------------------------|--------------------------------------|----------------------|--------------|
| 4050300006796 | 64615 HLX | Folding carton box 1 | 46 mm x 46 mm x 58 mm | 0.12 dm ³ | 36.00 g |
| 4050300665528 | 64615 HLX | Shipping carton box 20 | 238 mm x 105 mm x 123 mm | 3.07 dm ³ | 778.00 g |

The mentioned product code describes the smallest quantity unit which can be ordered. One shipping unit can contain one or more single products. When placing an order, for the quantity please enter single or multiples of a shipping unit.

References / Links

For further technical information please refer to the following OSRAM brochure:
“Technology and applications, Low-voltage tungsten-halogen lamps”
“Halogen lamps, low and medium voltage for entertainment, technical and medical applications” cross reference list

Disclaimer

Subject to change without notice. Errors and omission excepted. Always make sure to use the most recent release.